

Installation Instructions

4FT & 8FT LED Lightning Bolt Strip

FDLB-40-35K4K5K-120-347V-D SKU101251
 FDLB-80-35K4K5K-120-347V-D SKU101253

READ INSTRUCTIONS AND REVIEW ALL DIAGRAMS BEFORE INSTALLING THE FIXTURE.

CAUTION:

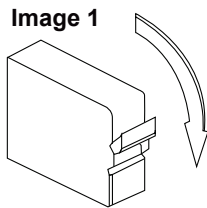
Risk of electrical shock. Make sure the power supply is OFF before installing or maintaining the fixture. Never perform maintenance or cleaning while the fixture is powered. Disconnect the power and ensure the fixture is cool before maintaining.

GENERAL:

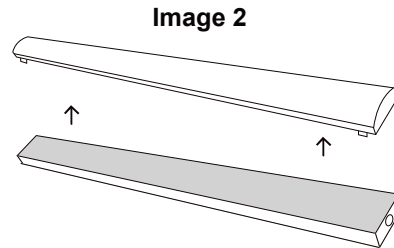
This product MUST be installed in accordance with the applicable installation code by a person familiar with the construction and operation of the product. Fixtures must be wired in accordance with the National Electrical Code and all applicable local codes. Proper grounding is requiring for safety.

ASSEMBLY AND INSTALLATION:

1. Locate the main power and turn it off. (see image 1)



2. Remove the diffuser parts from the fitting. (see image 2)



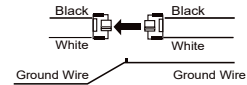
3. a. Put the cable through the hole. (see image 3a)
- b. Connect the connector and make sure all wires go into correct hole of connector. (see image 3b)
- c. Connect the ground wire of the power cord to the ground wire of the fixture. Ensure all conductors are fully sleeved and insulated.

Image 3a



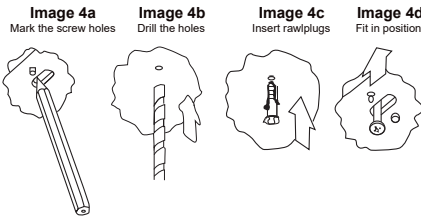
Feed main cable through the grommet in the base tray

Image 3b



Connect the disconnect

4. Hold the fitting up to the ceiling in the desired position. Secure fixture using supplies and tool appropriate to the mounting surface. (see Images 4a to 4d)



5. Put back the diffuser parts with to fitting. (see image 5)
6. Select wattase and select CCT. (see image 6)
7. Turn on the main power supply and test the luminaire for correct operation.

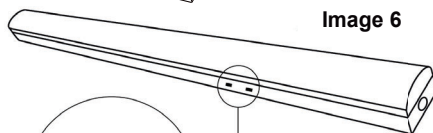
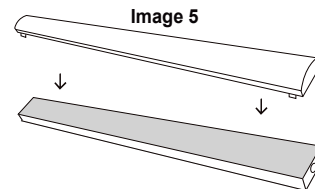
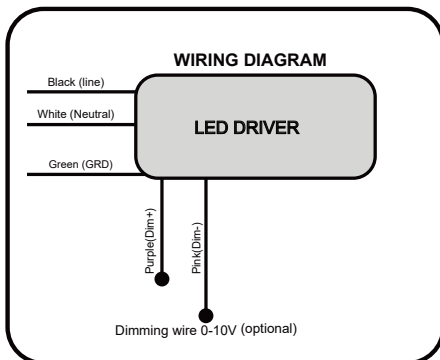
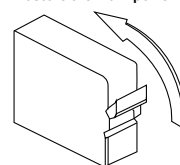


Image 7
Restore the main power



CAUTION
RISK OF
ELECTRIC
SHOCK

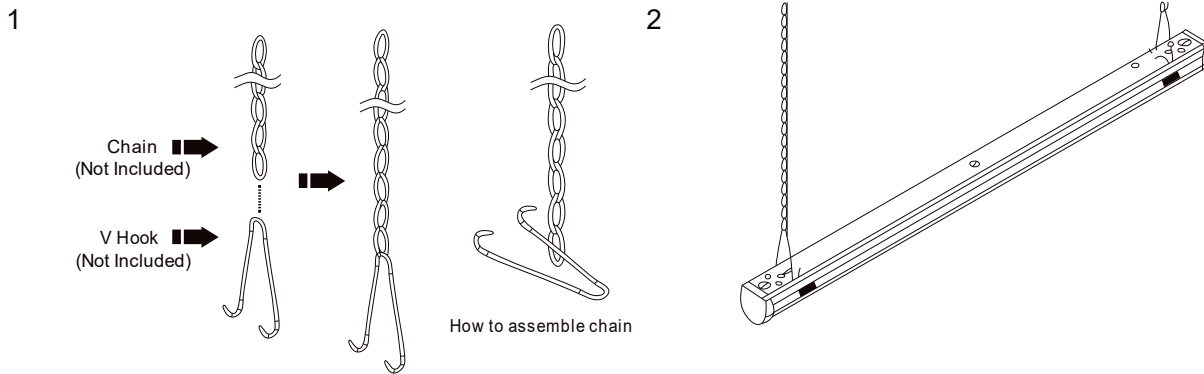
- DISCONNECT POWER BEFORE INSTALLING OR SERVICING.
- ALL ELECTRICAL WORK SHOULD BE COMPLETED BY QUALIFIED PERSONNEL AND MEET NATIONAL (NEC), REGIONAL AND LOCAL ELECTRICAL CODES.



Installation Instructions

4FT & 8FT LED Lightning Bolt Strip

Chain Mount (Optional):



Assemble the V Hook and Chain as shown in the figure.

Surface Mount Application

