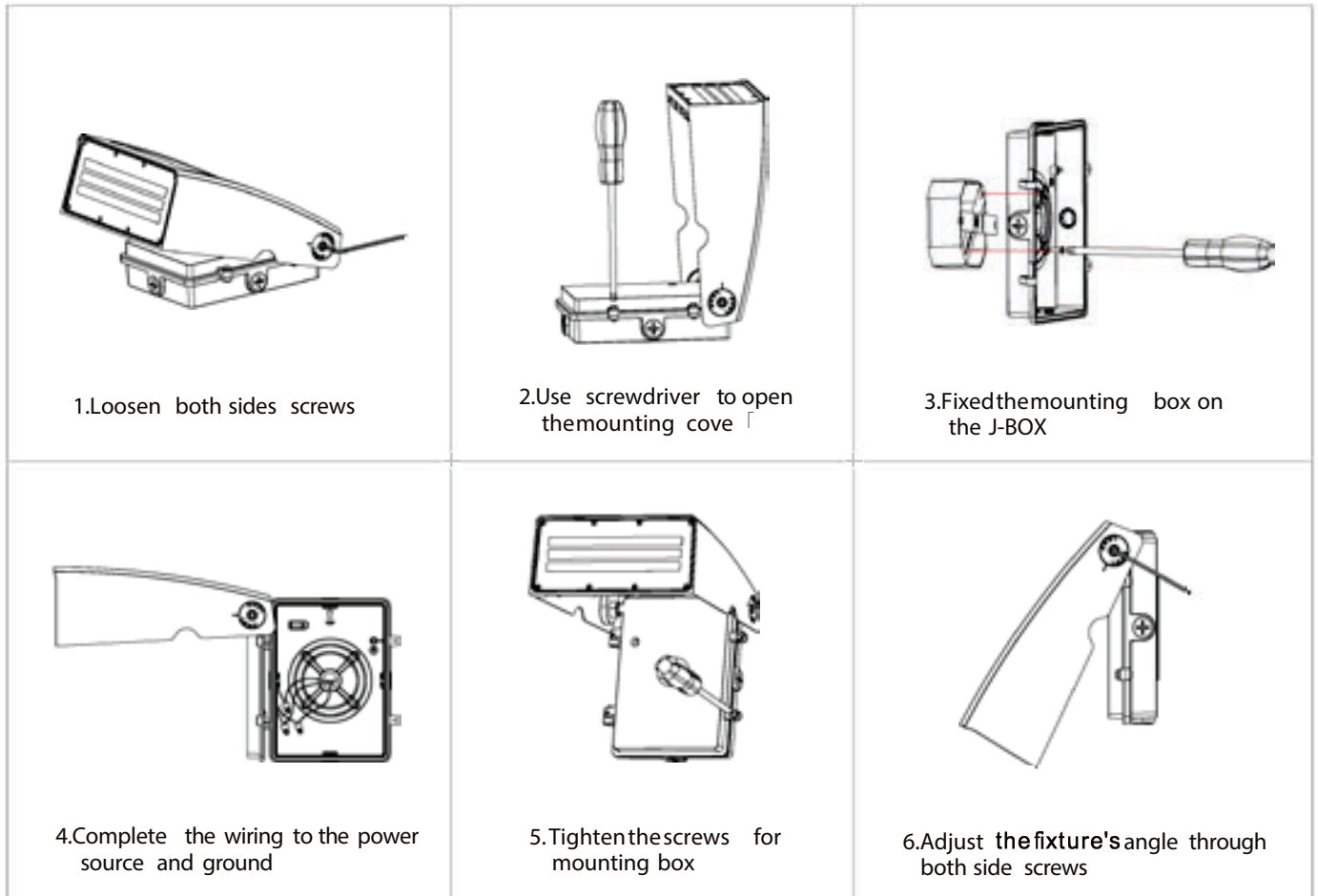


# Installation Instruction

## Cautions

READ AND FOLLOW ALL SAFETY INSTRUCTIONS

1. DANGER- Risk of shock- Disconnect power before installation.
2. This luminaire must be installed in accordance with the NEC or your local electrical code.
3. Suitable for wet location and operation in ambient not exceeding 40° C
4. Min 75° C supply conductors.
5. Products are not intended for use in environments containing airborne corrosive airborne corrosive agents such as chemical solvents, cleaners, or cutting fluids.
6. This luminaire is rated for 100-347Vac 60Hz only.
7. Replace the Lens if damaged



1. Loosen both sides screws of fixture.
2. Use screwdriver to open the mounting cover.
3. Fix the mounting box on the J-BOX.
4. Complete the wiring to the power source and ground (refer to wiring instructions)
  - a. Connect the black fixture wire to the power live wire
  - b. Connect the white fixture wire to the power neutral wire
  - c. Connect the green fixture wire to the power ground wire
5. Tighten the screws for mounting box and adjust the fixture's angle by side screws.