



User Manual of LED High Bay Light



Our led high bay lights come with high-brightness SMD2835 LED chips and unique high cold-forging aluminum heat sinks. The drivers provide continuous current and stable voltage. It is suitable for factories, warehouses, stadiums, gas stations, and train stations... e.L.c

☆ When installing the 120V driver, please sure to use screws and gaskets on both sides of the high bay fixture.

Product Features:

- ☆ The heat sink is made with high thermal conductivity aluminum. It is good for heat dissipation and the surface is anti-static.
- ☆ The housing's unique design helps to speed up the heat dissipation and ensure the life of the fixture. The integrated design of appearance makes the fixture look elegant.
- ☆ This fixture is waterproof,dustproof,and anticorrosive.

Technical Parameters:

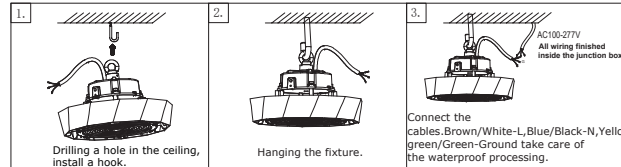
Product/Parameter	100W LED High Bay	150W LED High Bay	200W LED High Bay
Input Voltage	AC100-240V , AC120-347V	AC100-240V , AC120-347V	AC100-240V , AC120-347V
Power Frequency	50/60 Hz	50/60 Hz	50/60 Hz
Rated Power	100W	150 W	200 W
Material	aluminium	aluminium	aluminium
Reflector	PC Lens60°90°120degree	PC Lens60°90°120degree	PC Lens60°90°120degree
Driver 1	SS-120CNL-130°/ SS-120SN-130BH	SS-150CNL-260°/ SS-150SN-260BH	SS-200CNL-260°/ SS-200SN-260BH
Working Temperature	-30°~ +45°	-30°~ +45°	-30°~ +40°
Storing Temperature	-40°~ +65°	-40°~ +65°	-40°~ +65°
Working Humidity	15%~ 90% RH	15%~ 90% RH	15%~ 90% RH
Beam Angle	60°/90°/120°	60°/90°/120°	60°/90°/120°
Colour Temperature	5000K	5000K	5000K
Net Weight	1.8kg±0.5/2.05kg±0.5	2.2kg±0.5/2.05kg±0.5	2.2kg±0.5/2.05kg±0.5
Gross Weight	2.8kg±0.5/3.05kg±0.5	3.2kg±0.5/3.05kg±0.5	3.2kg±0.5/3.05kg±0.5
Lamp Dimension	Ø260*H140mm	Ø260*H140mm	Ø260*H140mm
Package Size	L310*W310*H175mm	L310*W310*H175mm	L310*W310*H175mm

Packing including:

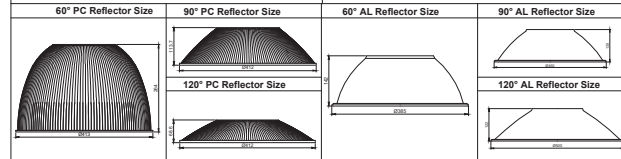
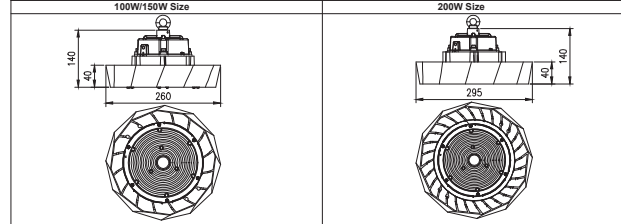
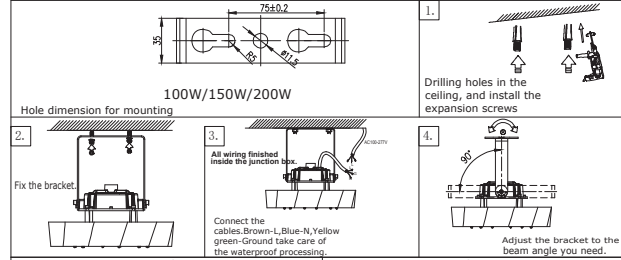
- 1) 1 pc LED High Bay light.
- 2) 1 pc product user manual.
- 3) 1 pc installation ring.

Warning:

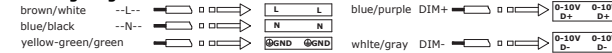
1. Please read the manual carefully before installation.
2. The fixture should be installed only by a professional electrician or engineer.
3. Before installation, please check if the local voltage range is corresponded with the working voltage of the fixture.
4. If the fixture is damaged, it should be replaced by the supplier, a service agent or a qualified person.
5. Please keep the fixture out of fire, electrical shock, and vibration.



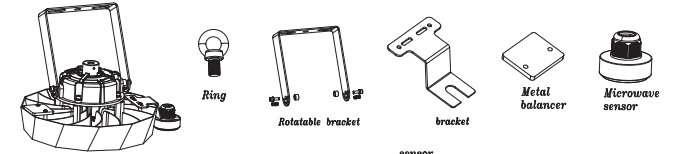
Installation 2



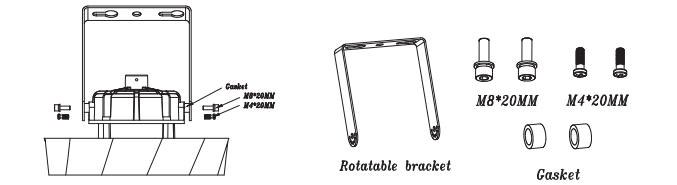
Wiring Diagram



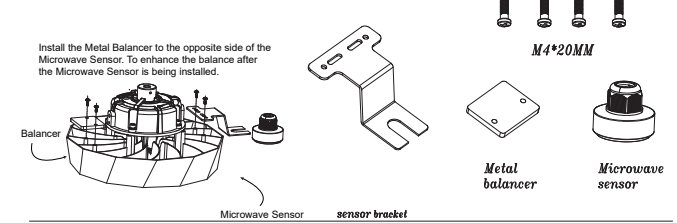
Installation Manual for Rotatable Bracket & Microwave Sensor with Metal Balancer



Rotatable bracket



Microwave sensor/Metal balancer



Wiring diagram

