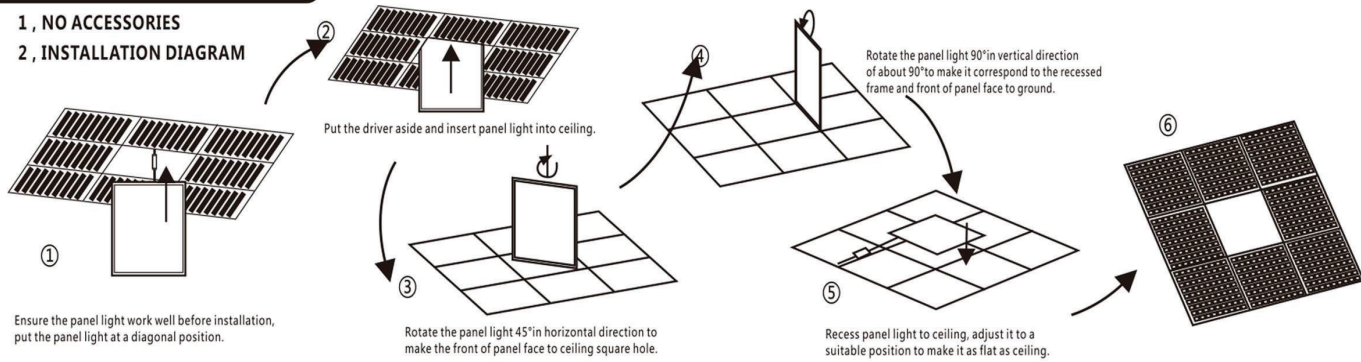


Panel light Installation Methods:

FLAT TYPE KEEL INSTALLATION

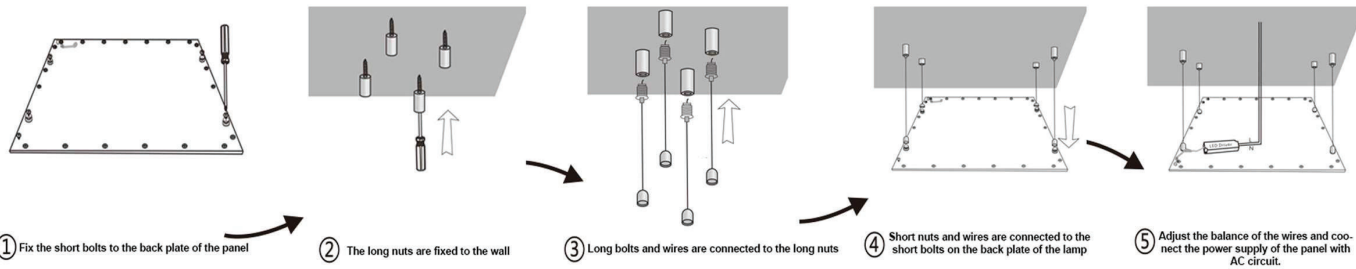
- 1, NO ACCESSORIES
- 2, INSTALLATION DIAGRAM



SUSPENSION TYPE HOISTING

- 1, ACCESSORIES X 4 Setscrews X 4 Self-tapping screws X 4 Nut X 4 Bolt X 4 Suspension

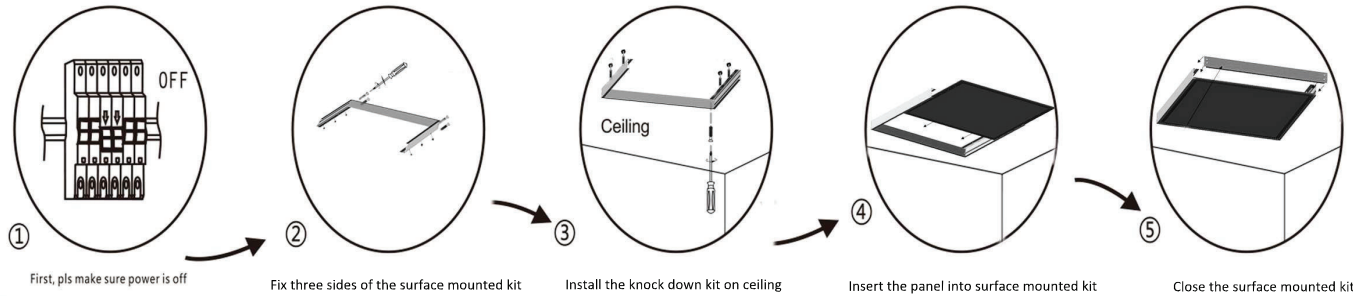
- 2, INSTALLATION DIAGRAM
- Ensure that the lamp work before installation, to ensure that the four suspension wires of equal length (inner bolt adjustable suspension length).



SURFACE MOUNTED

- 1, ACCESSORIES X 4 Setscrews X 4 Self-tapping screws Screws (on the back of panel)

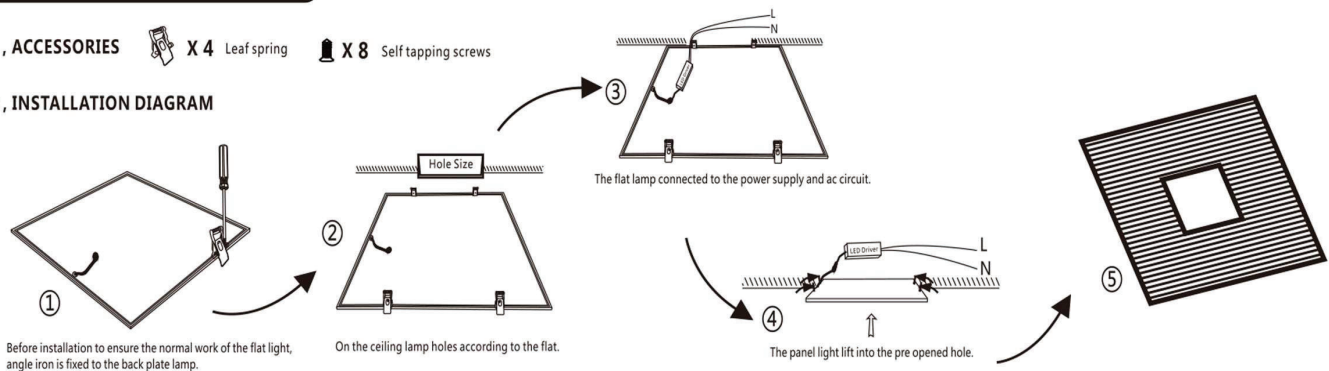
- 2, INSTALLATION DIAGRAM



EMBEDDED CIRCLIP MOUNTING

- 1, ACCESSORIES X 4 Leaf spring X 8 Self tapping screws

- 2, INSTALLATION DIAGRAM



Accessories:



Suspending Kits



Knock Down Surface



Embedded Circlip